

****This document provides highlights of the Newfoundland and Labrador Occupational Health and Safety Regulations and the CSA standard applicable to Self-Propelled Elevating Work Platforms. The reader is responsible for obtaining these two current documents and understanding all of the requirements therein**

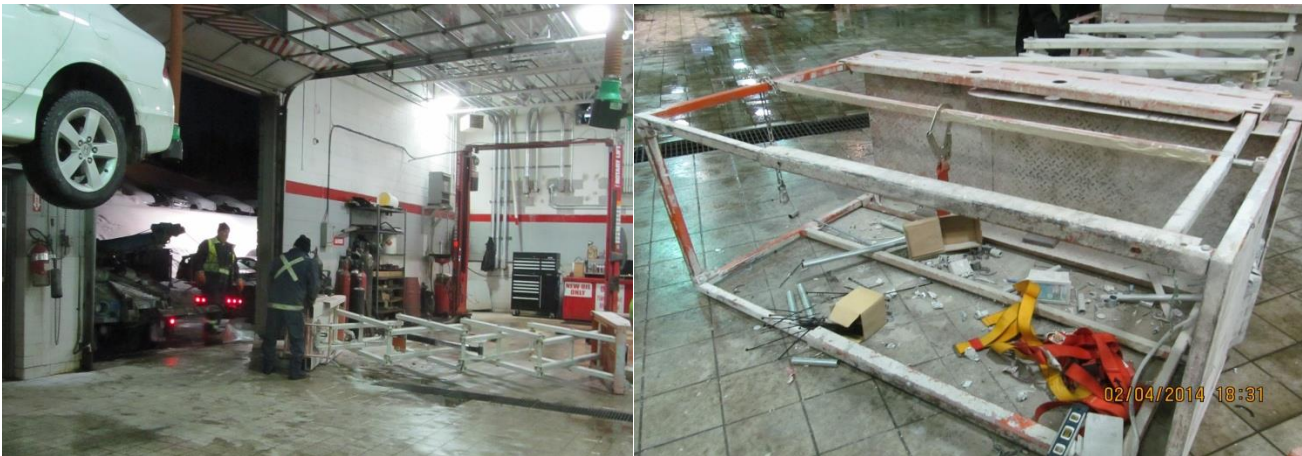
1. The importance of a **hazard assessment** for all jobs.

The CSA Standard B354.2 Self- Propelled Elevating Work Platforms, Part 6.2 Workplace Inspections requires before the aerial platform is used and during use, the area in which the aerial platform is to be used shall be inspected for possible hazards (limited list in the CSA Standard)

- Part XI- Scaffolds, Stages and Work Platforms Section 202.(2)(a) of the Newfoundland Labrador Occupational Health and Safety Regulations, 2012 states:

(2) A self-propelled integral chassis elevating work platform having a platform that cannot be positioned laterally completely beyond the base and for which primary functions are controlled from the platform shall meet the requirements of

(a) CSA Standard CAN/CSA -B354.2 "Self-Propelled Elevating Work Platforms";



-
2. **Training** – all workers who operate self-propelled elevating platforms (e.g. Scissors Lift) must be trained as per **Part 7 Section 7.1 of the CSA B354.2 Training Requirements.**

- Part XI- Scaffolds, Stages and Work Platforms Section 202.(2)(a) of the Newfoundland Labrador Occupational Health and Safety Regulations, 2012 states:

(2) A self-propelled integral chassis elevating work platform having a platform that cannot be positioned laterally completely beyond the base and for which primary functions are controlled from the platform shall meet the requirements of

(a) CSA Standard CAN/CSA –B354.2 “Self-Propelled Elevating Work Platforms”;

3. **Operating and Maintenance manuals** must be available for the workers to review who are using the self-propelled elevating work platform.
- Part XI- Scaffolds, Stages and Work Platforms Section 203.(1)(a)(b) of the Newfoundland Labrador Occupational Health and Safety Regulations, 2012 states:

Operating and maintenance manuals

203. (1) *The equipment manufacturer's*
- (a) *operation manual; and*
 - (b) *maintenance manual, containing maintenance instructions and replacement part information*

for each elevating work platform in use at the workplace shall be available at the workplace.

If the employer cannot produce the Operating and Maintenance manuals the lift cannot be used until written instruction for safe operating and maintenance of the equipment are supplied by a professional engineer.

- Part XI- Scaffolds, Stages and Work Platforms Section 203.(2) of the Newfoundland Labrador Occupational Health and Safety Regulations, 2012 states:

(2) Where either of the manuals referred to in subsection (1) is not available, the equipment shall not be used until the manual is obtained, or until written instructions for the safe operation and maintenance of the equipment are supplied by a professional engineer.

**CSA Standard B354.2 Self- Propelled Elevating Work Platforms
Part 4 Section 4.20 Manuals**

4. **Inspection, maintenance**, repairs and modification records shall be available to the equipment operator and the persons inspecting and maintaining the equipment.
- Part XI- Scaffolds, Stages and Work Platforms Section 204.(1) of the Newfoundland Labrador Occupational Health and Safety Regulations, 2012 states:

Inspection and maintenance records

204.(1) Records of inspection, maintenance, repair and modification shall be kept for an elevating work platform by the equipment operator and a person inspecting and maintaining the equipment

If inspection, maintenance, repairs and modification records are not available the elevating work platform must be inspected and certified by a professional engineer before use and an inspection and maintenance recording system shall be established.

- Part XI- Scaffolds, Stages and Work Platforms Section 204.(2) of the Newfoundland Labrador Occupational Health and Safety Regulations, 2012 states:

(2) Where the inspection and maintenance records required under subsection (1) are not available, an elevating work platform shall be inspected and certified by a professional engineer before use, and an inspection and maintenance recording system shall be established as required by subsection (1).

CSA Standard B354.2 Self- Propelled Elevating Work Platforms
Part 5 Inspection and Maintenance

5. **Shift inspection** - elevating work platform shall be inspected by the operator before each use.
- Part XI- Scaffolds, Stages and Work Platforms Section 205 of the Newfoundland Labrador Occupational Health and Safety Regulations, 2012 states:

Shift inspection

205. An elevating work platform shall be inspected by the operator before use on each shift and a condition that could endanger workers shall be remedied before the platform may be used.

CSA Standard B354.2 Self- Propelled Elevating Work Platforms
Part 5 Section 5.3.1 Daily Inspection
Part 5 Section 5.3.2 Periodic Inspection

6. **Annual Inspection and Certification** - annual inspection must be completed as per the manufacturer's instructions **or** CSA Standard B354.2 Self-Propelled Elevating Work Platforms **or** the direction of a professional engineer.
- Part XI- Scaffolds, Stages and Work Platforms Section 206 of the Newfoundland Labrador Occupational Health and Safety Regulations, 2012 states:

Annual inspection and certification

206. (1) An elevating work platform shall be inspected, maintained, repaired and modified in accordance with
(a) the manufacturer's instructions;
(b) the relevant CSA Standard as specified in section 202 ; (B354.2-01 Self-Propelled Elevating Work Platforms)
(c) the direction of a professional engineer; or
(d) another standard acceptable to the minister.

(2) An insulated aerial device shall be dielectrically tested at least annually in accordance with CSA Standard CAN/CSA -C225 "Vehicle Mounted Aerial Devices" or other standard acceptable to the minister and the insulating capability of the aerial device shall be certified by the testing agency.

CSA Standard B354.2 Self- Propelled Elevating Work Platforms
Part 5 Section 5.3.3 Annual Inspection
Part 5 Section 5.3.4 Structural Inspection (initial, 10 years and every 5 years after)

7. **Fall Protection** - all workers who are on elevating work platforms must wear fall protection and have received the required fall protection training as per Workplace NL (WHSCC).
- Part XI- Scaffolds, Stages and Work Platforms Section 207 of the Newfoundland Labrador Occupational Health and Safety Regulations, 2012 states:

Fall protection - elevating work platform

207. (1) A person on an elevating work platform shall wear a personal fall arrest system secured to an anchorage point that is approved by the manufacturer or professional engineer.

(2) A worker on an aerial ladder shall be continuously protected by means of a personal fall arrest system as required by Part X or shall maintain 3 points of contact with the ladder at all times.

CSA Standard B354.2 Self- Propelled Elevating Work Platforms
Part 6 Section 6.4.1 Fall Protection
Part 4 Section 4.13.5 Anchorage(s) for Fall Protection

8. **Safe Access** - there shall be a safe means of access and egress for workers to get on and off elevating work platforms.

- Part XI- Scaffolds, Stages and Work Platforms Section 208 of the Newfoundland Labrador Occupational Health and Safety Regulations, 2012 states:

Safe access

208. Safe means shall be provided to get on and off the platform of an elevating work platform.

CSA Standard B354.2 Self- Propelled Elevating Work Platforms
Part 4 Section 4.13.4 Access

9. **Rated Capacity** - shall be marked on the platforms and not be exceeded.

- Part XI- Scaffolds, Stages and Work Platforms Section 209 of the Newfoundland Labrador Occupational Health and Safety Regulations, 2012 states:

Rated capacity

209. The rated capacity of an elevating work platform

(a) shall be marked on the platform; and

(b) shall not be exceeded.

CSA Standard B354.2 Self- Propelled Elevating Work Platforms
Part 4 Section 4.19.3 Manufacture's Information
Part 5 Section 5.3.1 (h) Daily Inspection
Part 6 Section 6.4.5 Distribution of Load
Part 6 Section 6.4.11 Rated Loads

10. **Outriggers** - outriggers to be used as per the manufactures specifications.

- Part XI- Scaffolds, Stages and Work Platforms Section 210 of the Newfoundland Labrador Occupational Health and Safety Regulations, 2012 states:

Outriggers

210. (1) An outrigger on an elevating work platform shall be used in accordance with the manufacturer's instructions.

(2) Where an elevating work platform has outriggers, notices indicating the circumstances specified by the manufacturer for which the outriggers are to be used shall be clearly displayed at the operating controls for the platform.

CSA Standard B354.2 Self- Propelled Elevating Work Platforms

Part 4 Section 4.9.2 Stabilizing Devices

Part 4 Section 4.10.1.3 Unintended Retraction of Outriggers or Stabilizers

11. **Controls** - the controls on a elevating work platform must be clearly marked indicating its functions, continuous pressure required to operate and return to stop position when released.

- Part XI- Scaffolds, Stages and Work Platforms Section 211 of the Newfoundland Labrador Occupational Health and Safety Regulations, 2012 states:

Controls

211. (1) Each control on an elevating work platform shall be clearly identified to indicate its function.

(2) Controls on an elevating work platform shall be 'hold-to-run' (continuous pressure) type that return to the neutral or stop position when released.

(3) Controls on an elevating work platform shall be protected against inadvertent operation.

(4) Each set of operating controls of an elevating work platform shall be provided with an emergency stop device.

(5) An emergency stop device referred to in subsection (4) shall be

(a) within easy reach of the operator;

(b) clearly labelled 'STOP'; and

(c) red in colour.

(6) An elevating work platform shall have a clearly marked overriding lowering control to enable a worker at the lower controls to stop and lower the platform in the event of an emergency

CSA Standard B354.2 Self- Propelled Elevating Work Platforms

Part 4 Section 4.8 Controls

12. **Immobilization of Vehicles** - work platform must be level and secured against movement unless otherwise permitted by the manufacture.

- Part XI- Scaffolds, Stages and Work Platforms Section 212 of the Newfoundland Labrador Occupational Health and Safety Regulations, 2012 states:

Immobilization of vehicles

212. (1) *The carrier vehicle of an elevating work platform shall be secured against inadvertent movement before a worker occupies the platform.*

(2) *Where a manufacturer permits an elevating work platform to be elevated on sloping ground, the vehicle's wheels shall be secured according to the manufacturer's instructions and where no instructions have been provided, the wheels shall be chocked.*

13. Warning Devices - when required as per the manufacture.

- Part XI- Scaffolds, Stages and Work Platforms Section 214 of the Newfoundland Labrador Occupational Health and Safety Regulations, 2012 states:

Warning devices

214. *An elevating work platform, other than a vehicle-mounted aerial device which complies with the requirements of CSA Standard CAN/CSA -C225 "Vehicle Mounted Aerial Device", shall have a warning system consisting of an intermittent horn and flashing light which is automatically activated during motion of the work platform.*

**CSA Standard B354.2 Self- Propelled Elevating Work Platforms
Part 6 Section 6.4.10 Precaution for Other Moving Equipment**

14. Transportation of Workers - A worker may not be transported on an elevated work platform unless the transport is in accordance with the manufacturer's instructions.

- Part XI- Scaffolds, Stages and Work Platforms Section 215 of the Newfoundland Labrador Occupational Health and Safety Regulations, 2012 states:

Transporting workers

215. *A worker may not be transported on an elevated work platform unless the transport is in accordance with the manufacturer's instructions.*